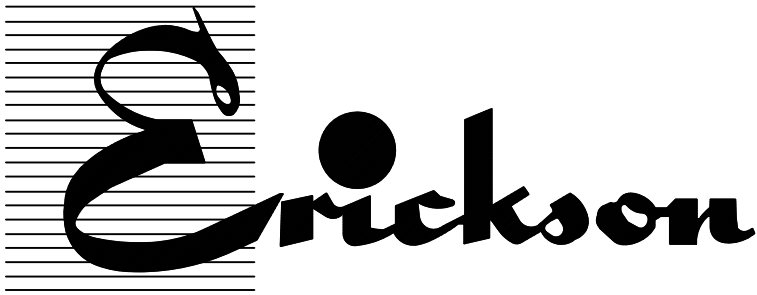


JANUARY 1, 2007

BULLETIN

PMCT-07B



[www.ericksonelectric.com](http://www.ericksonelectric.com)

400 - 800 AMP

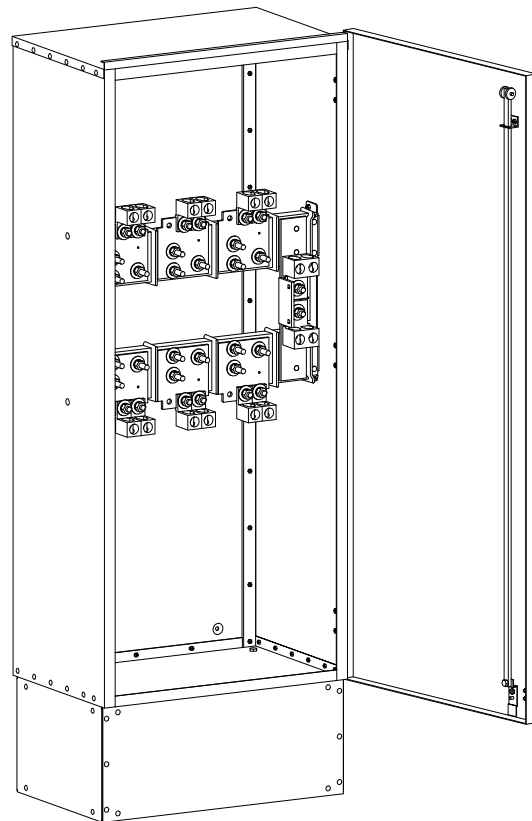
PAD MOUNTED  
METERING  
TRANSFORMER  
CABINETS



FILE NO. E62784

600 VOLT MAXIMUM

TYPE 3R ENCLOSURE  
FOR OUTDOOR USE

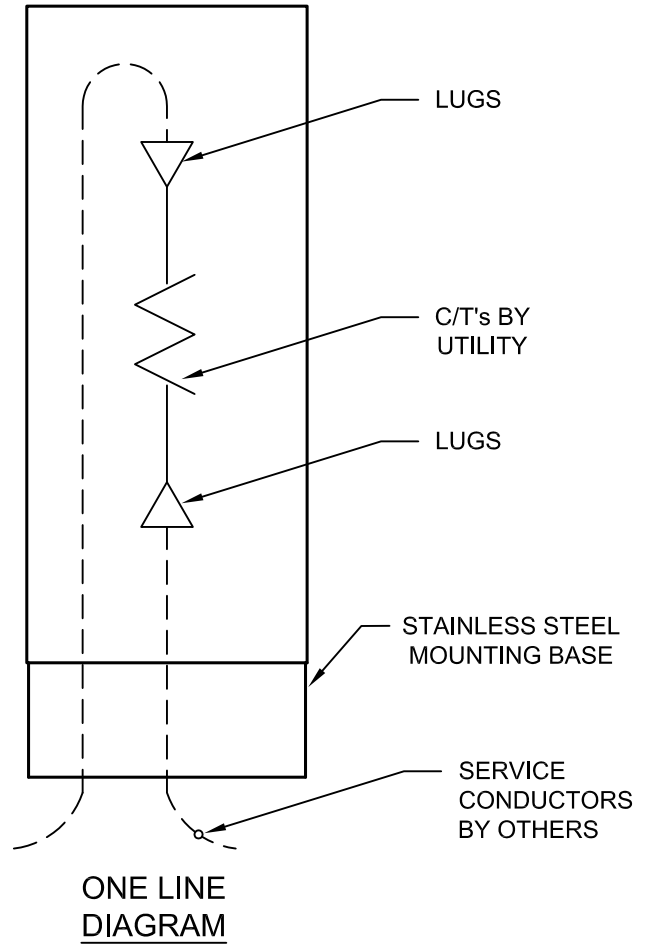
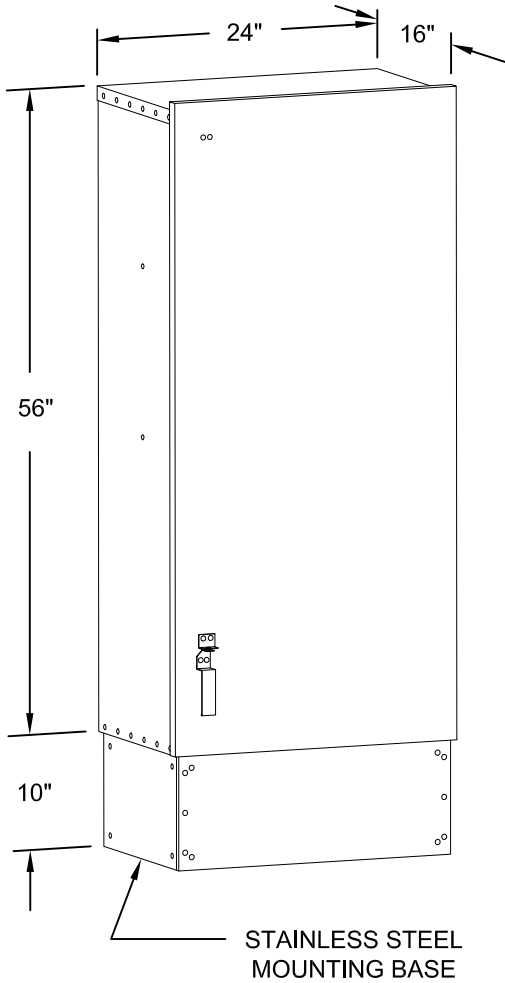


ERICKSON ELECTRICAL EQUIPMENT CO.  
475 BONNIE LANE • ELK GROVE VILLAGE, IL 60007  
TELEPHONE: (847) 640-7701 / 1-800-952-7225  
FAX: (847) 640-0565

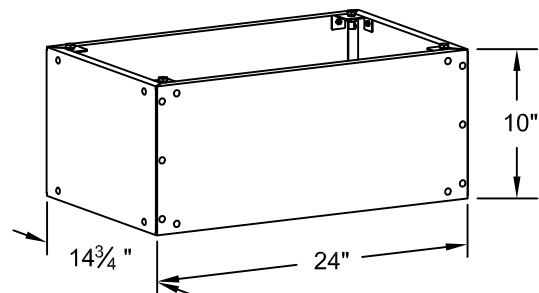
# CATALOG NUMBERS

AMPACITY	1 $\phi$ 3W	3 $\phi$ 3W	3 $\phi$ 4W	NO.OF LUGS PER PHASE #4-600 MCM	UNPROTECTED FAULT CURRENT RATING	ENCLOSURE SIZE			SHIPPING WEIGHTS
						WIDTH	HEIGHT	DEPTH	
400	PMCT-41	PMCT-43	PMCT-44	1	42,000 Amp	24"	56"	16"	3W-150 4W-155
600-800	PMCT-81	PMCT-83	PMCT-84	2	65,000 Amp	24"	56"	16"	3W-165 4W-170

\* IF METER FITTING IS NEEDED ADD SUFFIX "MF" TO END OF CATALOG NUMBER.



THE ABOVE CABINETS ARE PROVIDED WITH A STAINLESS STEEL MOUNTING BASE (CAT.# PMB1624X10). THE BASE IS FIRST ANCHORED TO THE CONCRETE PAD AND THEN THE METERING TRANSFORMER CABINET IS FASTENED TO THE MOUNTING BASE WITH THE HARDWARE PROVIDED.



**ERICKSON ELECTRICAL EQUIPMENT CO.**  
 475 BONNIE LANE • ELK GROVE VILLAGE, IL 60007  
 TELEPHONE: (847) 640-7701 / 1-800-952-7225  
 FAX: (847) 640-0565