

NOVEMBER 1, 2007

BULLETIN  
CTA/2D-07

[www.ericksonelectric.com](http://www.ericksonelectric.com)

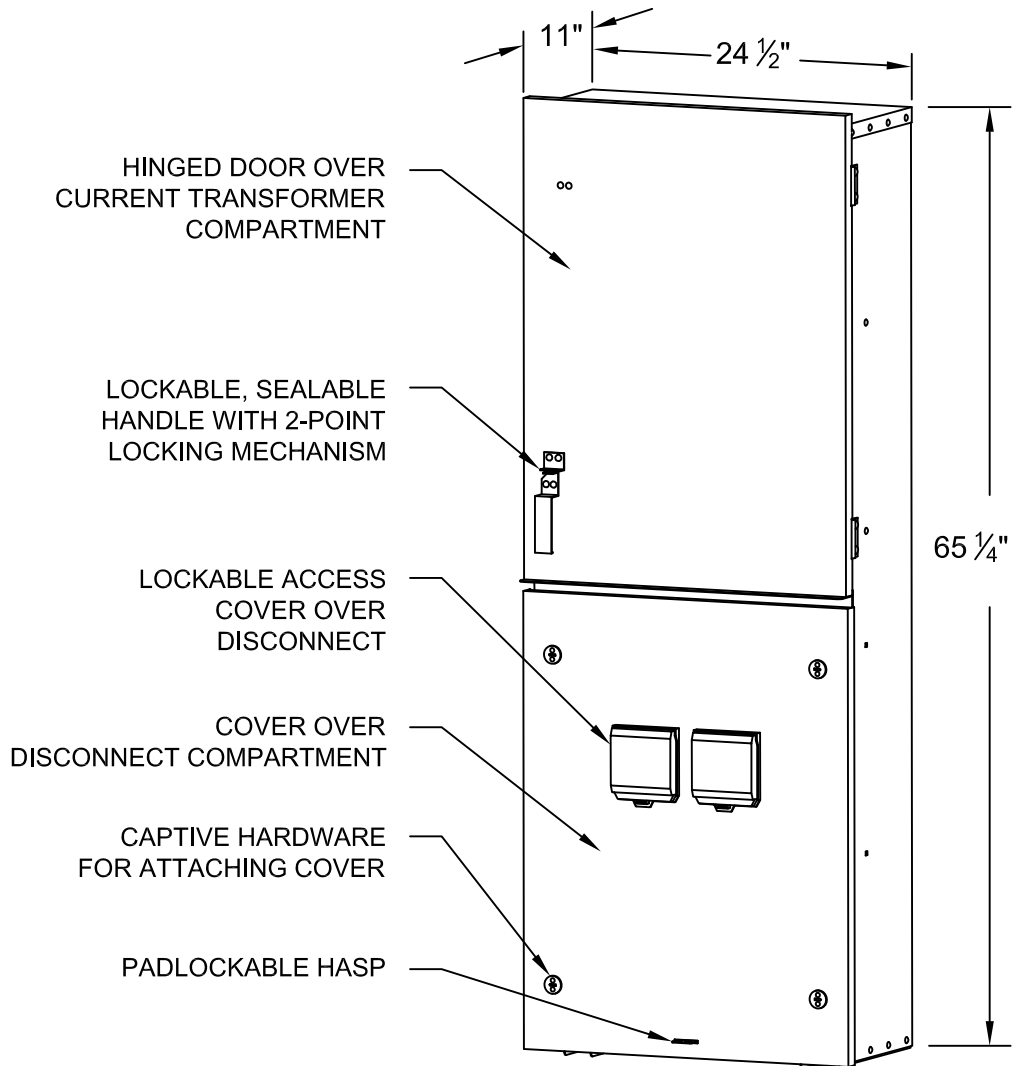
400 AMP.  
COMBINATION  
METERING  
TRANSFORMER  
SECTION  
WITH 2-200 AMP  
DISCONNECTS



SUITABLE FOR  
OVERHEAD OR  
UNDERGROUND  
SERVICE  
CONDUCTORS

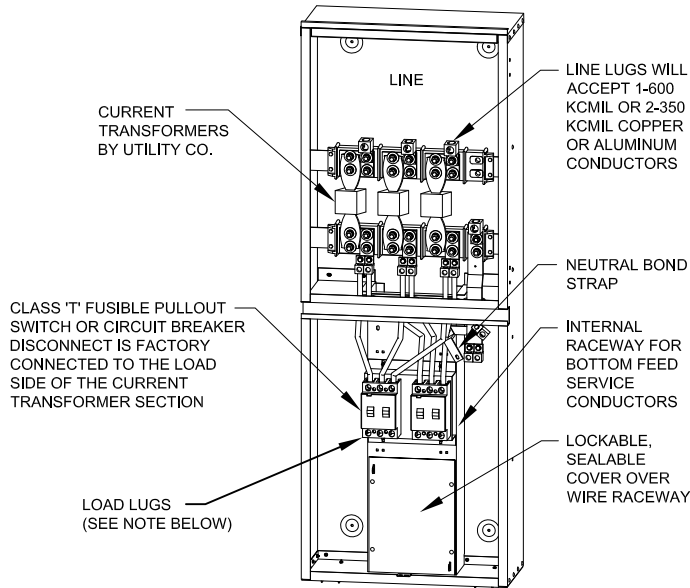
240/120 VOLT  
208Y/120 VOLT  
OR  
480Y/277 VOLT

TYPE 3R ENCLOSURE  
FOR INDOOR OR  
OUTDOOR USE.



AVAILABLE WITH 2-200 AMP  
PULLOUTS OR CIRCUIT BREAKERS

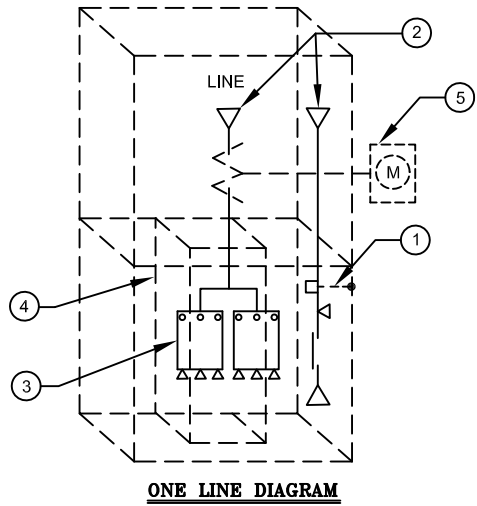
**ERICKSON ELECTRICAL EQUIPMENT CO.**  
475 BONNIE LANE • ELK GROVE VILLAGE, IL 60007  
TELEPHONE: (847) 640-7701 / 1-800-952-7225  
FAX: (847) 640-0565



**LOAD LUGS**

THE 200 AMP PULLOUT SWITCHES ARE PROVIDED WITH LOAD LUGS THAT WILL ACCEPT 1-300 KCMIL - #1/0 COPPER OR ALUMINUM CONDUCTOR PER TERMINAL.

THE 200 AMP CIRCUIT BREAKERS ARE PROVIDED WITH LOAD LUGS THAT WILL ACCEPT 1 - #4/0 - #4 COPPER OR ALUMINUM CONDUCTOR PER TERMINAL.



**ONE LINE DIAGRAM**

- ① NEUTRAL BOND (FOR SERVICE ENTRANCE EQUIPMENT)
- ② LINE LUGS
- ③ PULL OUT OR CIRCUIT BREAKER DISCONNECT
- ④ METAL RACEWAY FOR UNMETERED SERVICE CONDUCTORS (FOR UNDERGROUND SERVICE CONDUCTORS)
- ⑤ CURRENT TRANSFORMERS & METER

CATALOG NUMBERS	SYSTEM	VOLTAGE	DISCONNECT TYPE	SHORT CIRCUIT CURRENT RATING	SHIPPING WT.
CTAED3244N	1Ø 3W	240/120	CUTLER-HAMMER 'ED' CIRCUIT BREAKERS	65,000 A.	160 LBS.
CTAED4244N	3Ø 4W	208Y/120			
CTAFD4344N	3Ø 4W	480Y/277	CUTLER-HAMMER 'FD' CIRCUIT BREAKERS	35,000 A.	
CTAP3244N *	1Ø 3W	240/120	CLASS 'T' FUSIBLE PULL OUT SWITCH	200,000 A.	
CTAP4244N *	3Ø 4W	208Y/120			
CTAP4644N **	3Ø 4W	480Y/277			

\* USE CLASS 'T' FUSES RATED 300 VOLTS

\*\* USE CLASS 'T' FUSES RATED 600 VOLTS

NOTE: ADD THE SUFFIX "PT" IF PROVISIONS FOR MOUNTING POTENTIAL TRANSFORMER IS REQUIRED BY THE UTILITY COMPANY FOR 480Y/277V METERING.

CLASS 'T' FUSES MAY NOT BE SUITABLE FOR APPLICATIONS WHERE LARGE INRUSH CURRENTS ARE ENCOUNTERED.

**ERICKSON ELECTRICAL EQUIPMENT CO.**  
 475 BONNIE LANE • ELK GROVE VILLAGE, IL 60007  
 TELEPHONE: (847) 640-7701 / 1-800-952-7225  
 FAX: (847) 640-0565